

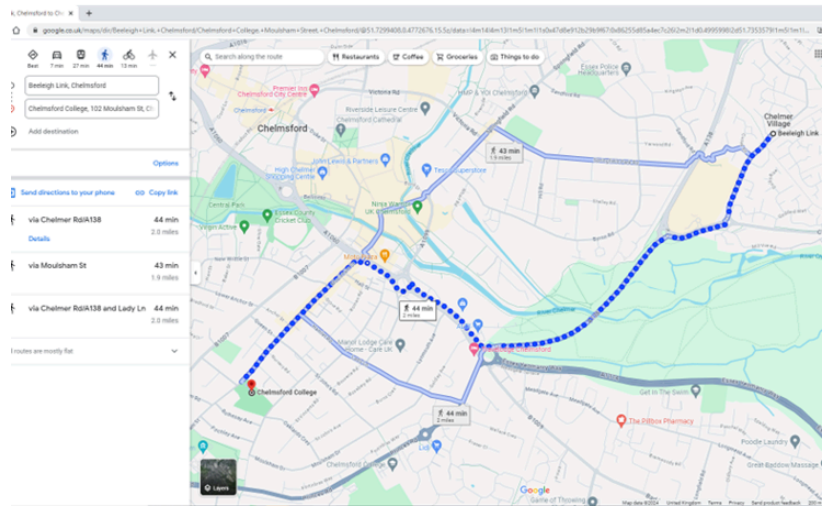
Travelling to College

Top Tips



Walking to College

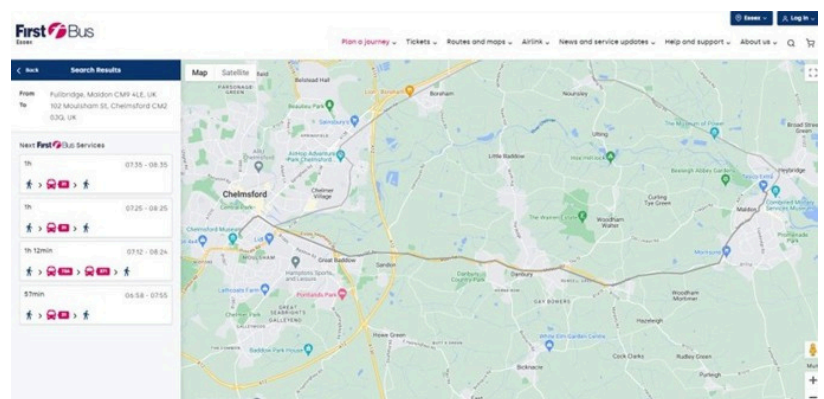
- Work out your journey, and how long it will take you. This will help you decide what time you need to leave home to be on time for your first lesson.
- You can use GoogleMaps for this - www.google.co.uk/maps



Travelling by Bus

You can use the First Bus website to help you plan your journey to college. Ensure that you leave enough time to walk from the bus stop.

College Bus stops on Parkway, New London Road, and Wood Street are convenient for both campuses. From January 2025, single fares are a maximum of £3 with First Bus. A discounted Student Travel MTicket is also available through First Bus using our college's first bus scheme. Consider which is the most cost-effective way for you to travel.



Travelling to College

2

Our Facilities

Travelling by Train

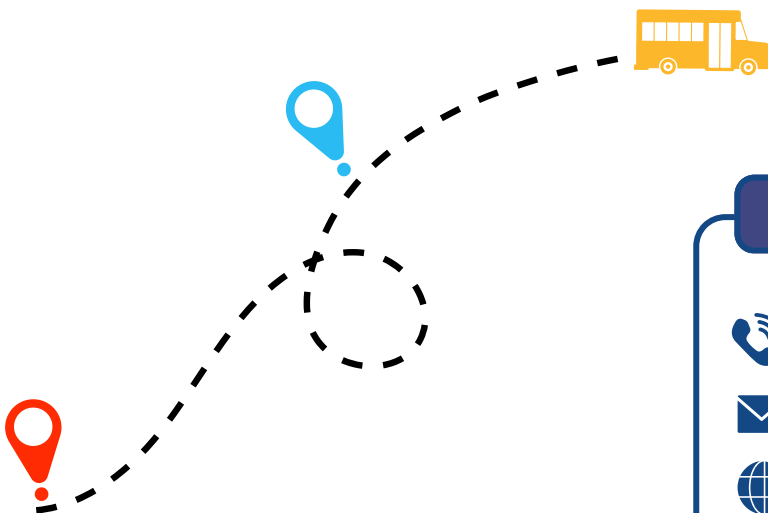
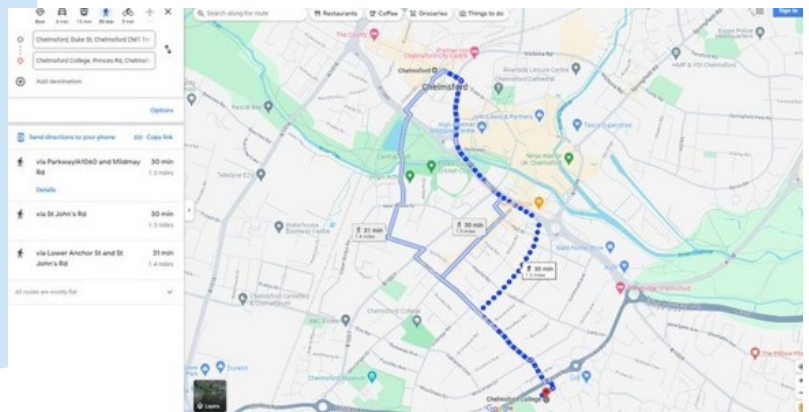
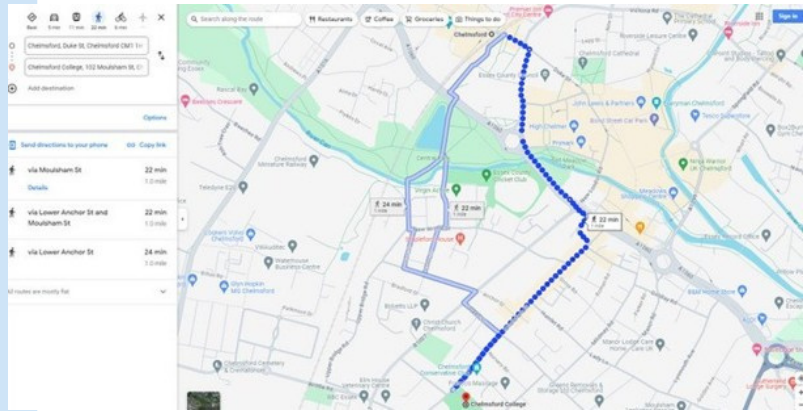
Chelmsford Train Station is run by Greater Anglia and is just outside Chelmsford High Street.

Moulsham Street Campus is approximately a 22-minute walk from Chelmsford Train Station.

Princes Road Campus is approximately 30 minutes walk from Chelmsford Train Station

Learners can also apply online Essex County Council Post-16 Transport or call 0345 603 2200.

[CLICK HERE](#)



Support



01245 265611



supportandwellbeing@chelmsford.ac.uk



www.chelmsford.ac.uk